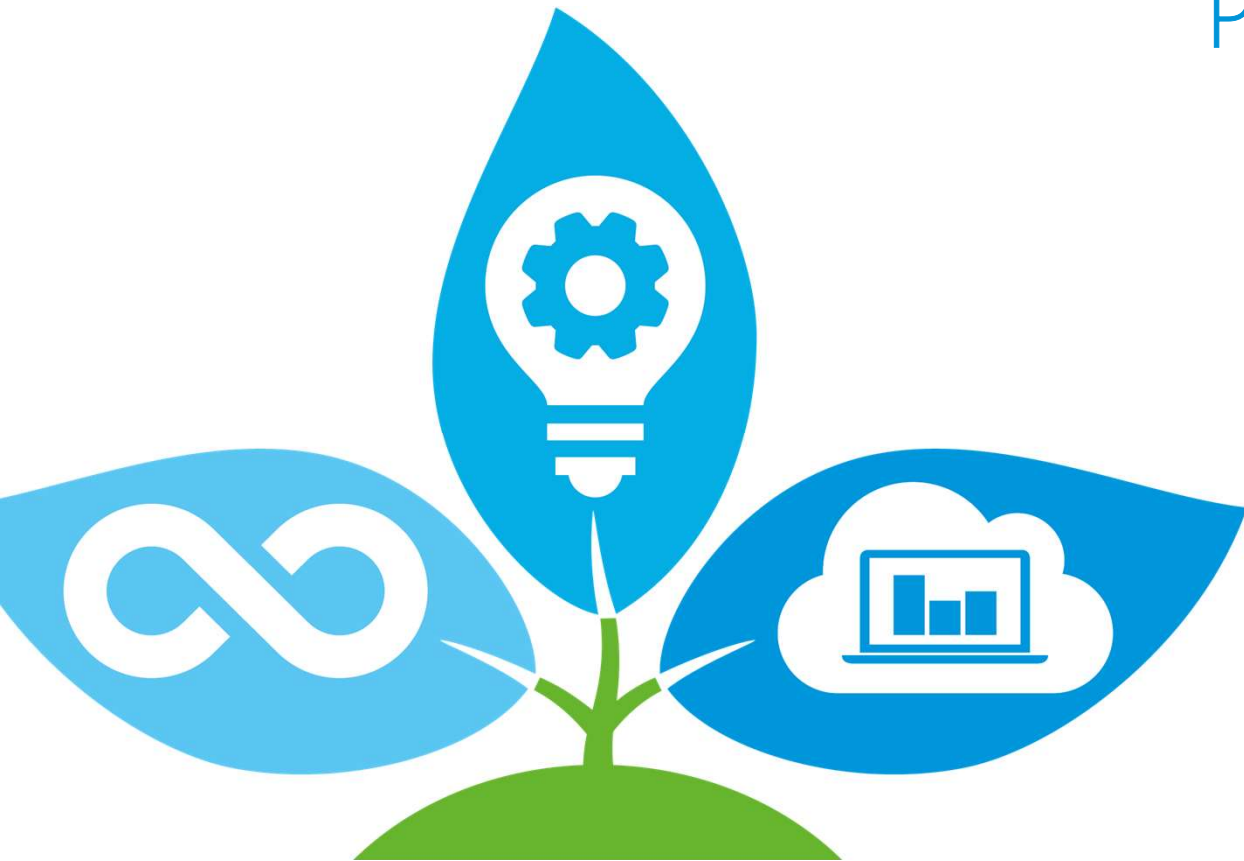


Eligibilité gamme RXYSA-A Compact  
Certificats Economies Energie  
Fiche BAT-TH-158  
Pompe à Chaleur Air-Air



**VRV 5** S-series

**BLUEVOLUTION**



**VRV 5-S Compact  
RXYSA-AV-AY**

**Conditions d'éligibilité:**

Etas froid minimum: 250%  
Etas chaud minimum: 145 %  
6 modèles éligibles








**VRV 5** S-series  
**BLUEVOLUTION**



Certificats d'économies d'énergie  
Opération n° BAT-TH-158

**Pompe à chaleur réversible de type air/air**

**Modèles éligibles:**

- RXYSA4AV 
- RXYSA4AY 
- RXYSA5AV 
- RXYSA5AY 
- RXYSA6AV 
- RXYSA6AV 