

A low-angle photograph of a modern glass skyscraper against a blue sky with light clouds. The building's facade is composed of large glass panels that reflect the sky and clouds. A semi-transparent blue rectangular box is overlaid on the right side of the image, containing white text.

Air cooled scroll inverter heat pump, split version

EWYT-CZI + EWYT-CZO

Ideal for limited space installations

Suitable for comfort & process applications

Glycol free application for low temperature climates

Thanks to the possibility of installing the indoor unit in technical rooms, there is no need to use glycolated water even in cold climates



Full safety measures for R-32 indoor installations

Daikin way for integrated safety measure to minimize the room size:

- › Extractor fan enabled by leak detector mounted as standard
- › Two independent output contacts for acoustic and visual alarms



Capacity range

From 21 to 64 kW
suitable for offices and light commercial buildings





Working conditions

Heating guaranteed all year round and hot water production up to 60°C and cooling from -20°C up to 45°C in order to respond to all countries need installations



Full inverter technology

SEER up to 5,7 | SCOP up to 4,19 | SEPR up to 8.48

Great energy efficiency levels thanks to Daikin Inverter Driven Fans and Daikin Inverter Scroll Compressors



Plant management & connectivity

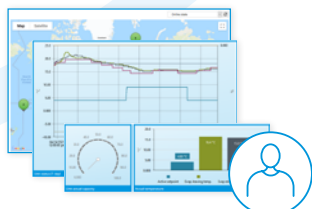
Master/Slave or Modbus RTU are standard to ensure a perfect plant Control



Remote monitoring and system optimization with Daikin proprietary cloud platform Daikin on Site

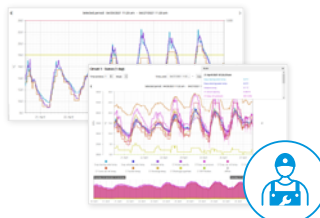
- › Predictive maintenance to prevent breakdowns
- › Visualize energy consumption to reduce energy costs
- › Monitor and control your building no matter where you are via the Daikin On Site
- › Remote diagnostic support to increase your system lifetime
- › Manage Multiple sites

Dashboards



OPERATOR

Diagnostics



SERVICE

Remote software upgrade



DAIKIN

Heat pump EWYT-CZ split version series

| Efficiency data | | | | EWYT + EWYT | 021CZI-A1 + 021CZO-A1 | 032CZI-A1 + 032CZO-A1 | 040CZI-A1 + 040CZO-A1 | 064CZI-A2 + 064CZO-A2 |
|------------------|-----------------------------------|---------|------|-----------------------------------|-----------------------|-----------------------|-----------------------|-----------------------|
| Heating capacity | Nom. | | | kW | 19.93 | 32.082 | 38.996 | 61.816 |
| Power input | Heating | Nom. | | kW | 5.81 | 9.32 | 11.73 | 19.21 |
| Cooling capacity | Nom. | | | kW | 21.13 | 32.70 | 39.93 | 64.41 |
| Power input | Cooling | Nom. | | kW | 6.56 | 10.28 | 13.33 | 21.86 |
| COP | | | | | 3.433 | 3.442 | 3.325 | 3.218 |
| EER | | | | | 3.221 | 3.181 | 2.995 | 2.946 |
| SEER | | | | | 5.41 | 5.70 | 5.36 | 5.34 |
| Space heating | Average climate water outlet 35°C | General | SCOP | | 4.19 | | 4.18 | 4.01 |
| | | | | Seasonal space heating eff. class | A++ | | | |



| Indoor Unit | | | | EWYT | 021CZI-A1 | 032CZI-A1 | 040CZI-A1 | 064CZI-A2 |
|-------------------|----------|------------------------------------|-----------|-------------------|-----------|-----------|-----------|-----------|
| Casing | Colour | Ivory white | | | | | | |
| | Material | Galvanized and painted steel sheet | | | | | | |
| Dimensions | Unit | HeightxWidthxDepth | mm | 700 x 1,120 x 830 | | | | |
| Weight | Unit | | kg | 133 | | 144 | | 172 |
| Operation range | Heating | Ambient | Min.~Max. | °C | | | | -20 ~ 35 |
| | | Water side | Min.~Max. | °C | | | | 20 ~ 60 |
| | Cooling | Ambient | Min.~Max. | °CDB | | | | -20 ~ 45 |
| | | Water side | Min.~Max. | °C | | | | 4 ~ 20 |
| Sound power level | Nom. | | dBA | 63 | | 64.50 | | 66 |

| Outdoor Unit | | | | EWYT | 021CZO-A1 | 032CZO-A1 | 040CZO-A1 | 064CZO-A2 |
|----------------------|-------------------------|--------------------|---------------------|---------------------|---------------------|-----------|---------------------|-----------|
| Dimensions | Unit | HeightxWidthxDepth | mm | 1,878 x 1,152 x 802 | 1,878 x 1,752 x 802 | | 1,878 x 2,906 x 814 | |
| Weight | Unit | | kg | 265 | 357 | | 620 | |
| Compressor | Quantity | 1 | | | | | | |
| | Type | Scroll compressor | | | | | | |
| Refrigerant | Type | R-32 | | | | | | |
| | GWP | 675 | | | | | | |
| | Charge | | kg | 7.30 | 9.50 | 9.80 | 16.60 | |
| | Charge | | TCO ₂ Eq | 4,928 | 6,422 | 6,635 | 11,255 | |
| Sound power level | Cooling | Nom. | dBA | 76 | 79 | 80 | 83 | |
| Sound pressure level | Cooling | Nom. | dBA | 59.60 | 62.20 | 63.20 | 65.40 | |
| Power supply | Phase/Frequency/Voltage | | Hz/V | 3N~/50 /400 | | | | |

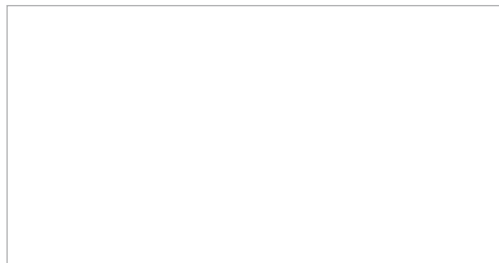
All the cooling performances (cooling capacity, unit power input in cooling and EER) are based on the following conditions: 12,0/7,0°C; ambient 35,0°C, unit at full load operation; operating fluid: water; fouling factor = 0. EN14511:2018

All the heating performances (heating capacity, unit power input in heating and COP) are based on the following conditions: 40,0/45,0°C; ambient 7,0°C, unit at full load operation; operating fluid: water; fouling factor = 0. EN14511:2018

SEER is calculated in accordance with the regulation No. 2281/2016 and standard EN14825 for information only.

The values of Low Temperature SCOP and η_s are calculated in accordance with the Ecodesign regulation No. 813/2013 and the standard EN 14825-2018.

Daikin Europe N.V. Naamloze Venootschap Zandvoordestraat 300 · 8400 Oostende · Belgium · www.daikin.eu · BE 0412 120 336 · RPR Oostende (Publisher)



Daikin Europe N.V. participates in the Eurovent Certified Performance programme for Liquid Chilling Packages and Hydronic Heat Pumps, Fan Coil Units and Variable Refrigerant Flow systems. Check ongoing validity of certificate: www.eurovent-certification.com

ECPEN22-420

09/22



The present publication is drawn up by way of information only and does not constitute an offer binding upon Daikin Europe N.V. Daikin Europe N.V. has compiled the content of this publication to the best of its knowledge. No express or implied warranty is given for the completeness, accuracy, reliability or fitness for particular purpose of its content and the products and services presented therein. Specifications are subject to change without prior notice. Daikin Europe N.V. explicitly rejects any liability for any direct or indirect damage, in the broadest sense, arising from or related to the use and/or interpretation of this publication. All content is copyrighted by Daikin Europe N.V.

Printed on non-chlorinated paper.